

PT2X SUBMERSIBLE PRESSURE TRANSMITTER RANGES

3C352	15 PSIG	3C357	100 PSIG
3C353	30 PSIG	3C358	100 PSIA
3C354	30 PSIA	3C359	300 PSIG
3C355	50 PSIG	3C360	300 PSIA
3C356	50 PSIA		

CABLE OPTIONS

6E540	Vented PU INW Label	6E542	Vented HDPE
6E543	Vented FEP INW Label		

MISCELLANEOUS OPTIONS and ACCESSORIES

1/4" NPT adapter	Connectors
Cable strain relief kit	Cable - Well seal to computer
Desiccant tube refill bottle	200', 500' and 1500' cable reels
2" & 4" well seal adapters	

Availability and Support

We maintain an extensive inventory and a wide range of high quality accessories to meet all your water monitoring and sampling needs in a timely manner.

INW's technical engineers are available via telephone and email to ensure that your experience with our equipment goes smoothly.

MECHANICAL

TRANSMITTER

Body Material	316 stainless steel
Wire Seal Materials	Viton® and Teflon®
Desiccant	High- and standard-capacity packs available

Terminating Connector	Available
------------------------------	-----------

Weight	.80 lbs.
---------------	----------

CABLE

OD	0.28" maximum
Break Strength	138 lbs.
Maximum Length	2000 feet
Weight	4 lbs. per 100 feet

ELECTRICAL

PRESSURE

Static Accuracy (B.F.S.L. 25° C)	±0.1% FSO (maximum) ±0.06% FSO (typical) 0.06% available on request.
Temperature Error (reference 25° C)	±0.5% FSO (maximum) ±0.25% FSO (typical)
Maximum Zero Offset at 25° C	±0.25% FSO
Resolution	16 bit
Over Range Protection	2x (except 300 PSIA)

TEMPERATURE

Accuracy	±0.75° C (maximum)
Resolution	0.1° C

TIME

Accuracy	±4 min/yr (maximum) ±2 min/yr (typical)
-----------------	--

Recommended Operating Temperature Range	0° C to 40° C Contact factory for extended temperature ranges.
--	---

PT2X

SMART SENSOR



AquiStar® PT2X
Smart Sensor.

A combination
pressure/temperature
sensor and a datalogger
in one small, entirely
submersible unit.

**SPECIAL
NOTICE
TO CURRENT
PS9800
OWNERS!**

Contact your INW sales representative for cost saving details on upgrading your current PS9800 to a PT2X!

1.800.776.9355
www.inwusa.com

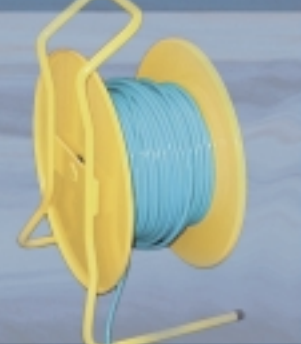
Rental Units Available!

We offer same day service and guarantee clean, calibrated, and excellently maintained equipment.
Daily, weekly, and contractor pricing available.

Make Real-Time Monitoring Simple with the AquiVar® PT2X Smart Sensor

Features

- Sensor and logger in one unit - no need for separate logger.
- Measures pressure, temperature, & time
- Low power/long battery life*
- Easy field calibration via software
- Real-time monitoring
- 130,000+ records in non-volatile memory
- 0.1% accuracy
- Optional auxiliary power
- Optional digital control/alarm channel
- MODBUS® protocol for RTU & PLC applications



Portable Installations

- Available with free-standing lightweight reel
- Easy let-down and take-up
- Rugged enough for demanding field use

*One year+ battery life
with four measurements per hour.

Patented
Cable Harness

Vented Cable

Uses

- Groundwater monitoring
- Leachate monitoring
- Pump testing
- Tide monitoring
- River flow and level observations
- Tank level control
- Reservoir level monitoring
- Thermal profiling

Dedicated Installations

- No need to pull sensor to upload data
- Low profile, liquid tight well seal
- Long life batteries*
- Network several sensors using INW's Aqua4Plus software

User-replaceable
AA batteries

PT2X
Sensor/Datalogger
Circuit Board,
containing 1 MB
of non-volatile memory

Pressure Elements Available
15, 30, 50, 100, or 300 PSI

Inlets

End cone - interchangeable with 1/4" NPT

Small diameter -
fits in 1" wells

0.84" DIA

10.75"

Wireless Applications

RS485 and MODBUS® capability for
easy installation in wireless applications
in remote locations.

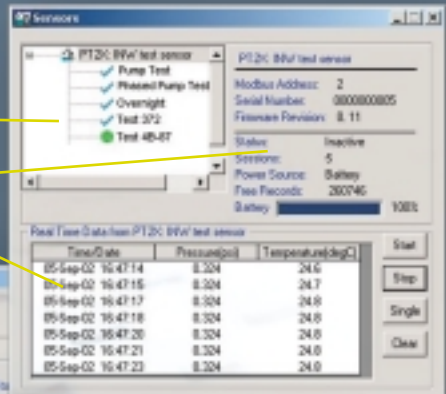
Comes with INW's Aqua4Plus Software

Aqua4Plus is a multi-layered control program. The
program can access sensors on several comm ports. Each comm
port can connect to several sensors. Each sensor can have
several test sessions. Each session can have several test phases.

Access to up to 16
sensors, each with
multiple test sessions.

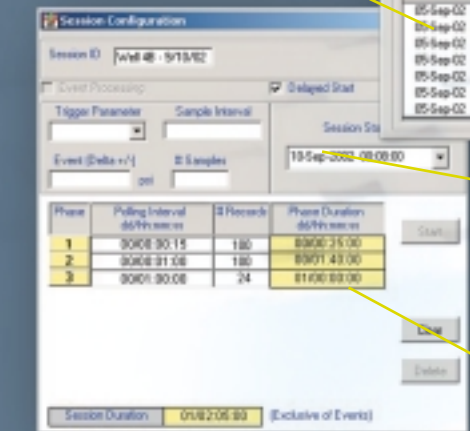
View sensor status

Monitor real time data



Set triggers for event
recording or control
functions

Create flexible
and powerful test
sequences



Display data in
tabular format...

...or export to
Excel for
calculations
and graphics

