

RuggedReader - QUICK START GUIDE

The RuggedReader is a field-worthy meter for the Multi-Parameter TROLL 9000. Use it to calibrate, profile, set up/download tests, and monitor low-flow parameters.

1 Connect the MP TROLL 9000 to the RuggedReader

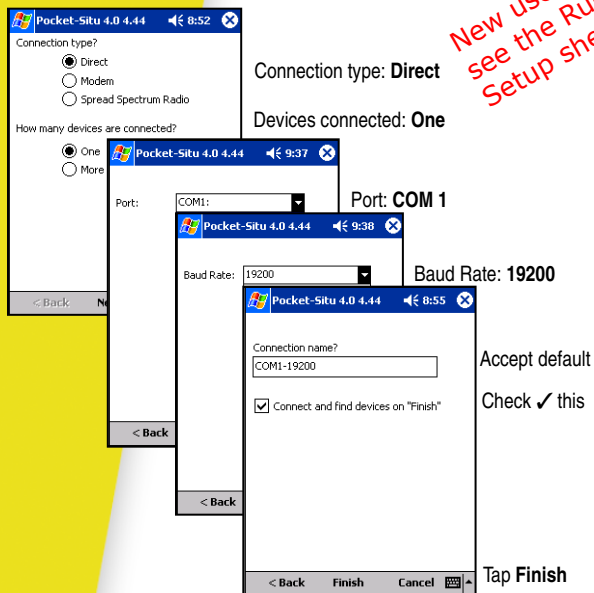
Connect the Quick-Connect cable to the TROLL 9000 and to the ComIT. Connect the ComIT to the RuggedReader.

2 Launch Pocket-Situ

If Pocket-Situ is installed on the RuggedReader, turn the device on and select the shortcut from the Start Menu. If installation is necessary, see the Pocket-Situ Installation instructions.

3 First session—Set up the COM port (Connection Wizard)

Click Next through 3 screens of the Connection Wizard. In the last screen, check ☒ Connect and find devices on Finish. Then tap Finish.



TIP: You only need to set up the COM port once. In your next session, launch Pocket-Situ, tap the COM port, and tap Find.



Rugged Reader

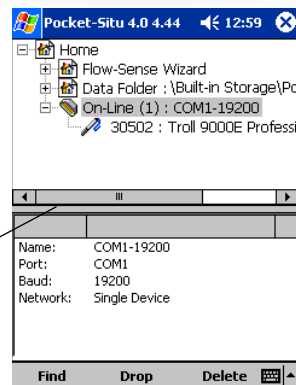
Power on

ComIT

Quick-Connect cable

TROLL 9000

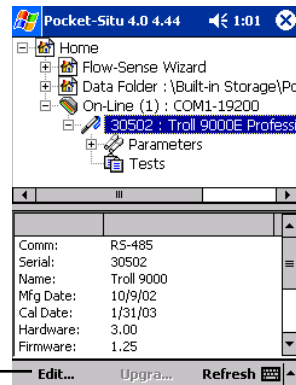
4 Pocket-Situ connects to the device and displays it in the Navigation tree. When connected, the screen looks like this:



To resize the screen, press on this area with the stylus and drag it up or down

5 Highlight the TROLL 9000 in the Navigation tree

Pocket-Situ will retrieve and display information about the device and all installed sensors. This can take a moment.

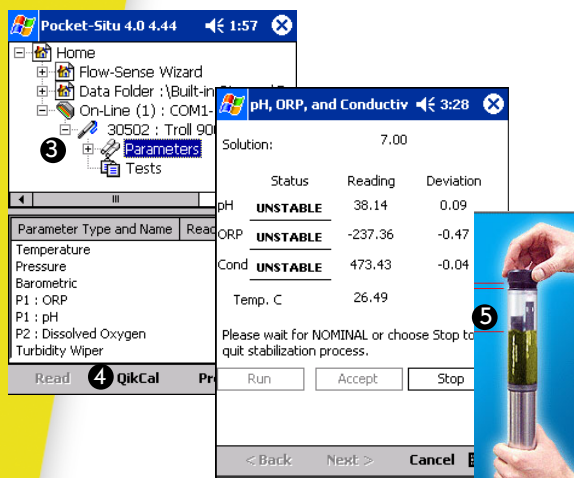


6 We recommend you select **Edit** first, then **Clock**, to set the device clock before taking readings or setting up tests.

RuggedReader - QUICK START GUIDE

7 Quick-Cal the Basic water quality sensors

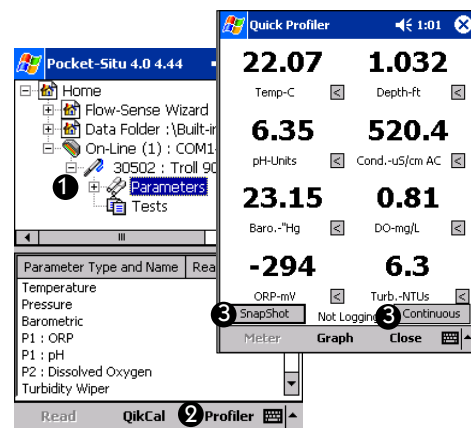
- 1 Check for a small sponge in the Cal Cup—remove it if present.
- 2 Fill the Cal Cup to the line with Quick Cal solution (room temperature) and attach to the probe.
- 3 Tap Parameters in the Navigation tree.
- 4 Tap **QikCal**. Follow on-screen instructions. pH, ORP and Conductivity calibration starts automatically.
- 5 When stable, invert probe and pour out some solution so DO sensor membrane is in air and temperature sensor is completely covered. Re-attach cap loosely. Tap **Run** to complete DO calibration.
- 6 When stable, remove Cal Cup, attach restrictor and nose cone.



8 Start Profiling . . .

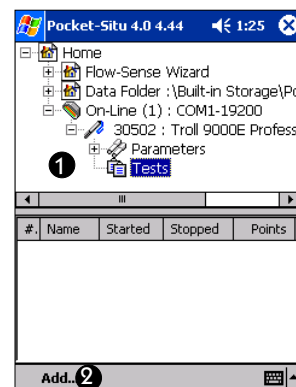


- 1 Tap Parameters in the Navigation tree.
- 2 Tap **Profiler**.
- 3 To log the data, select **Snapshot** or **Continuous**.



. . . or set up a test to log data.

- 1 Tap Tests in the Navigation tree.
- 2 Tap **Add**.
- 3 Follow the steps in the Test Wizard. Section 6 of the MP TROLL 9000 Operator's Manual has complete information.



About the RuggedReader™ The RuggedReader is a handheld mobile device with an ARM processor and Pocket PC 2003 operating system. Pocket-Situ and its data files are in flash memory. On a new Reader, install the Power-Boot module if necessary and charge the battery as described in the RuggedReader Setup sheet. A 12-hour charge will yield approximately 12 hours of operation under typical conditions. Set the date & time. If a device reset is necessary, press the power button and hold for about 20 seconds. Complete information is in the RuggedReader Getting Started Guide on the Win-Situ/Pocket-Situ installation CD.

1 800 4INSITU
(toll-free, US and Canada) or 307 742 8213 **www.in-situ.com**

0047360 rev.001 12/03

Due to continuing product development this information is subject to change without notice. In-Situ, Win-Situ, Pocket-Situ, miniTROLL, TROLL, Quick-Connect, Profiler Plus, ComIT, and RuggedReader are trademarks or registered trademarks of In-Situ Inc. Microsoft, Windows, and ActiveSync are trademarks or registered trademarks of Microsoft Corp. Copyright © 2003 by In-Situ Inc. All rights reserved.

cut line