

ENERGY AND COMFORT

## Ventilation Test Instruments



### Features and Benefits

- Pre-calibrated plug-and-play accessory probes for TSI Models 7575 Q-TRAK™ monitor and 9565 VELOCICALC® meter
- Compact design with ergonomic handle
- Four versions available with multiple measurement capability
  - Model 984 - Low concentration (ppb) VOC and temperature
  - Model 985 - High concentration (ppm) VOC and temperature
  - Model 986 - Low concentration (ppb) VOC, temperature, CO<sub>2</sub> and humidity
  - Model 987 - High concentration (ppm) VOC, temperature, CO<sub>2</sub> and humidity
- Calculates VOC exposure in mass concentration
  - Requires knowledge of VOC being measured
  - Enter specific response factor into meter
- Two-year factory warranty
- Send only the probe back for factory calibration

### Volatile Organic Compounds (VOC) Indoor Air Quality Probes

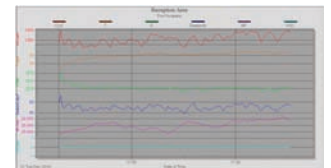
TSI VOC probes are pre-calibrated, plug-and-play accessory probes for multi-purpose meters Models 7575 Q-TRAK monitor and 9565 VELOCICALC meter. When combined with these meters, long-term data analysis can be performed and reported which is useful for monitoring or investigating the indoor environment.

### Applications

- IAQ investigations
- Industrial hygiene surveys
- Building commissioning
- Track down emissions to their source

### Data Collection and Reporting

Expanded data logging capacity and the inclusion of TRAKPRO Data Analysis Software provides the capabilities to work more



effectively and efficiently. The Q-TRAK monitor can store up to 38.9 days of data collected at one-minute log intervals. The stored data can be recalled, reviewed on screen, and downloaded for easy reporting. TRAKPRO software helps you to generate professional graphs for your reports.



TRUST. SCIENCE. INNOVATION.

## Field Service

TSI VOC probes are competitively priced to others in the marketplace but feature a lower cost of ownership due its compact design and construction which is geared for field service capability.

- Field calibration
  - Temperature
  - Relative humidity
  - Volatile organic compounds (VOC)
  - Carbon dioxide (CO<sub>2</sub>)
- Replaceable sensors
- Sensor maintenance
  - Lamp cleaning
  - Lamp replacement



## Instrumentation

The 7575 Q-TRAK monitor or 9565 VELOCICALC meter feature a menu-driven user interface for easy operation. VOC probes are also compatible with AIRFLOW™ Instruments TA460 series and TSI's discontinued 7565 and 9555 series, if instrument firmware is at revision 2.10 or higher.

On-screen prompts and step-by-step instructions guide the user through operation and field calibration. These instruments also feature an ergonomic, over molded case design and a keypad lockout to prevent tampering during unattended use.

- Display up to five measurements simultaneously
- Log multiple parameters to investigate trends
- Calculate dew point, wet bulb and percent outside air (VOC models 986 and 987)
- Store up to 38.9 days of data collected at one-minute log intervals
- User selectable logging intervals and start/stop times
- Internal barometric pressure sensor
- Download data to TRAKPRO™ data analysis software
  - Report generation
  - Graph creation
  - Instrument programming



## Specifications

### VOC Probes for Multi-Purpose Meters Models 984, 985, 986, and 987

#### Model 984 Low Concentration (ppb) VOC and Temperature

**Range** 10 to 20,000 ppb, 14 to 140°F (-10 to 60°C)  
**Accuracy** ±1.0°F (±0.5°C)<sup>1</sup>  
**Resolution** Up to 10 ppb, 0.1°F (0.1°C)

#### Model 985 High Concentration (ppm) VOC and Temperature

**Range** 1 to 2,000 ppm, 14 to 140°F (-10 to 60°C)  
**Accuracy** ±1.0°F (±0.5°C)<sup>1</sup>  
**Resolution** Up to 10 ppm, 0.1°F (0.1°C)

#### Model 986 Low Concentration (ppb) VOC, Temperature, CO<sub>2</sub>, and Humidity

**Range** 10 to 20,000 ppb, 0 to 5,000 ppm CO<sub>2</sub>  
 14 to 140°F (-10 to 60°C), 5 to 95% RH  
**Accuracy** ±3% of reading or 50 ppm, whichever is greater  
 ±1.0°F (±0.5°C)<sup>1</sup>, ±3% RH<sup>2</sup>  
**Resolution** Up to 10 ppb, 0.1 ppm CO<sub>2</sub>, 0.1°F (0.1°C), 0.1% RH

#### Model 987 High Concentration (ppm) VOC, Temperature, CO<sub>2</sub>, and Humidity

**Range** 1 to 2,000 ppm, 0 to 5,000 ppm CO<sub>2</sub>  
 14 to 140°F (-10 to 60°C), 5 to 95% RH  
**Accuracy** ±3% of reading or 50 ppm, whichever is greater  
 ±1.0°F (±0.5°C)<sup>1</sup>, ±3% RH<sup>2</sup>  
**Resolution** Up to 10 ppm, 0.1 ppm CO<sub>2</sub>, 0.1°F (0.1°C), 0.1% RH

#### Probe Dimensions

**Length** 7.0 in. (17.8 cm)  
**Base Diameter** 0.75 in. (1.9 cm)  
**Tip Diameter** 1.0 in. (2.54 cm)

Note: The 984 and 986 probes are designed to measure ppb concentrations of VOCs. The 10 to 20,000 ppb range corresponds to 0.01 to 20 ppm.

<sup>1</sup> Accuracy with instrument case at 77°F (25°C), add uncertainty of 0.05°F/°F (0.03°C/°C) for change in instrument temperature.

<sup>2</sup> Accuracy with probe at 77°F (25°C). Add uncertainty of 0.1% RH/°F (0.2% RH/°C) for change in probe temperature. Includes 1% hysteresis.

Q-TRAK, TRAKPRO, and VELOCICALC are trademarks of TSI Incorporated.

Specifications are subject to change without notice.

**TSI Incorporated** - 500 Cardigan Road, Shoreview, MN 55126-3996 USA

<b>USA</b>	Tel: +1 800 874 2811	E-mail: info@tsi.com	Website: www.tsi.com
<b>UK</b>	Tel: +44 149 4 459200	E-mail: tsiuk@tsi.com	Website: www.tsiinc.co.uk
<b>France</b>	Tel: +33 491 11 87 64	E-mail: tsifrance@tsi.com	Website: www.tsiinc.fr
<b>Germany</b>	Tel: +49 241 523030	E-mail: tsigmbh@tsi.com	Website: www.tsiinc.de
<b>India</b>	Tel: +91 80 41132470	E-mail: tsi-india@tsi.com	
<b>China</b>	Tel: +86 10 8251 6588	E-mail: tsi-beijing@tsi.com	
<b>Singapore</b>	Tel: +65 6595 6388	E-mail: tsi-singapore@tsi.com	



TRUST. SCIENCE. INNOVATION.

Contact your local TSI Distributor or visit our website [www.tsi.com](http://www.tsi.com) for more detailed specifications.