



AquaLogger

The AquaLogger is a remote logging device designed to be left on-site for medium length deployments. The battery powered unit features a large built in memory and an LED indicator. Every AquaLogger comes complete with LoggerLink PC software and USB data cable so that you can set up your logging regime at your desk.

Build

There are two types of Aqualogger available each designed to be used with specific probes:



AquaLogger-2000:

for use with the AquaPlus, AP-LITE, AP-700, AP-800 and AP-2000 probes.

AquaLogger-7000:

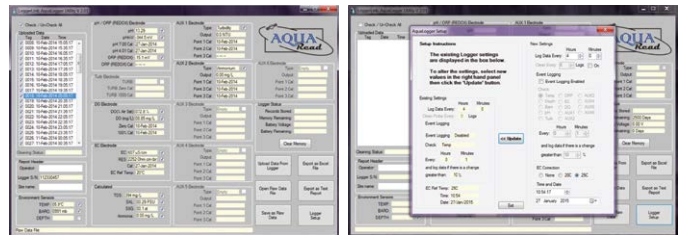
for use with the AP-5000, AP-6000 and AP-7000 Aquaprobes.

Each Aqualogger features an AquaConn connector to allow connection to the Aquaprobe and its extension cable.

The AquaLogger-2000 now utilises lithium batteries for extended life. The AquaLogger-7000 is used with standard C cell alkaline batteries.

LoggerLink Features

- Simple data download
- Export data as a full report or save file to your PC
- Set up the logging regime and event triggers
- Upload settings back to the AquaLogger
- Check available memory and battery life



Estimated battery life (same for both)

Logging Rate	Estimated battery life
Every Minute	2 Weeks
Every 5 Minutes	2.5 Months
Every 10 minutes	4 Months
Every 15 Minutes	6 Months
Every 30 minutes	1 Year
Every Hour	2 Years

AquaLogger Mechanical Specification

Dimensions (L x Dia)	AquaLogger 2000: 44mm x 250mm AquaLogger 7000: 77mm x 250mm
Weight	AquaLogger 2000: 420g AquaLogger 7000: 1500g
Data Memory	15,000 full sets inc GLP data
Atmospheric Pressure	150mb - 1150mb Accuracy +/- 1mb
Interface	USB (cable provided)
Power Supply	AquaLogger 2000: 2x Lithium C cells AquaLogger 7000: 6x Lith C cells + 2x AAA cells
Battery Life	Dependent upon logging rate and temperature.
Operating Temperature	-20°C to +70°C
Protection Class	IP67

The AquaLogger can be used with Aquaprobes to measure the following parameters



Standard Parameters		Range	0 – 500.0% / 0 – 50.00 mg/L	
		Dissolved Oxygen	Resolution	0.1% / 0.01mg/L
		Accuracy	0 - 200%: ± 1% of reading, 200% - 500%: ± 10%	
Depth AP-2000/ AP-5000	Range	± 0 – 60.00 m (60m max displayed depth, max probe immersion 100m)		
	Resolution	1cm		
	Accuracy	± 0.5% FS		
Depth AP-7000	Range	± 0 – 99.99 m		
	Resolution	1cm		
	Accuracy	± 0.2% FS		
Conductivity (EC)	Range	0 – 200 mS/cm (0 - 200,000 µS/cm)		
	Resolution	3 Auto-range scales: 0 – 9999 µS/cm, 10.00 – 99.99 mS/cm, 100.0 – 200.0mS/cm		
	Accuracy	± 1% of reading		
TDS*	Range	0 – 100,000 mg/L (ppm)		
	Resolution	2 Auto-range scales: 0 – 9999mg/L, 10.00 – 100.00g/L		
	Accuracy	± 1% of reading		
Resistivity*	Range	5 Ω • cm – 1 MΩ • cm		
	Resolution	2 Auto-range scales: 5 – 9999 Ω • cm, 10.0 – 1000.0 KΩ • cm		
	Accuracy	± 1% of reading		
Salinity*	Range	0 – 70 PSU / 0 – 70.00 ppt (g/Kg)		
	Resolution	0.01 PSU / 0.01 ppt		
	Accuracy	± 1% of reading		
Seawater Specific Gravity*	Range	0 – 50 σt		
	Resolution	0.1 σt		
	Accuracy	± 1.0 σt		
pH	Range	0 – 14 pH / ± 625mV		
	Resolution	0.01 pH / ± 0.1mV		
	Accuracy	± 0.1 pH / ± 5mV		
ORP	Range	± 2000mV		
	Resolution	0.1mV		
	Accuracy	± 5mV		
Temperature (non freezing)	Range	-5°C – +50°C (23°F – 122°F)		
	Resolution	0.01°C / 0.1°F		
	Accuracy	± 0.5 °C		

* Readings calculated from EC and temperature electrode values

ISE		Range	0 – 9,000mg/L (ppm)	
		Ammonium	Resolution	2 Auto-range scales: 0.00 - 99.99 mg/L, 100.0 - 8,999.9 mg/L
			Accuracy	± 10% of reading or 2ppm (whichever is greater)
Range	0 – 9,000mg/L (ppm)			
Ammonia†	Resolution	2 Auto-range scales: 0.00 - 99.99 mg/L, 100.0 - 8,999.9 mg/L		
	Accuracy	± 10% of reading or 2ppm (whichever is greater)		
	Range	0 – 20,000mg/L (ppm)		
Chloride	Resolution	2 Auto-range scales: 0.00 - 99.99 mg/L, 100.0 – 19,999.9 mg/L		
	Accuracy	± 10% of reading or 2ppm (whichever is greater)		
	Range	0 – 1,000mg/L (ppm)		
Fluoride	Resolution	2 Auto-range scales: 0.00 - 99.99 mg/L, 100.0 – 999.9 mg/L		
	Accuracy	± 10% of reading or 2ppm (whichever is greater)		
	Range	0 – 30,000mg/L (ppm)		
Nitrate	Resolution	2 Auto-range scales: 0.00 - 99.99 mg/L, 100.0 – 29,999.9 mg/L		
	Accuracy	± 10% of reading or 2ppm (whichever is greater)		
	Range	0 – 2,000mg/L (ppm)		
Calcium	Resolution	2 Auto-range scales: 0.00 - 99.99 mg/L, 100.0 – 1,999.9 mg/L		
	Accuracy	± 10% of reading or 2ppm (whichever is greater)		

† Ammonium electrode required. Readings calculated from ammonium, pH and temperature values.

Optical		Range	0 – 3000 NTU	
		Turbidity	Resolution	2 Auto-range scales: 0.0 - 99.9 NTU, 100 - 3000 NTU
			Accuracy	± 5% of auto-ranged scale
Range	0 – 500.0 µg/L (ppb)			
Chlorophyll	Resolution	2 Auto-range scales: 0.00 - 99.99 µg/L, 100.0 - 500.0 µg/L		
	Repeatability	± 5% of reading		
	Range	0 – 300,000 cells/mL		
Phycocyanin (freshwater BGA)	Resolution	1 cell/mL		
	Repeatability	± 10% of reading		
	Range	200,000 cells/mL		
Phycerythrin (marine BGA)	Resolution	1 cell/mL		
	Repeatability	± 10% of reading		
	Range	0 – 500 µg/L (ppb)		
Rhodamine WT Dye	Resolution	2 Auto-range scales: 0.00 - 99.99 µg/L, 100.0 - 500.0 µg/L		
	Accuracy	± 5% of reading		
	Range	0 – 500 µg/L (ppb)		
Fluorescein Dye	Resolution	2 Auto-range scales: 0.00 - 99.99 µg/L, 100.0 - 500.0 µg/L		
	Accuracy	± 5% of reading		
	Range	0 – 10,000 µg/L (ppb) (Napthalene)		
Refined Oil	Resolution	0.1 µg/L		
	Repeatability	± 10% of reading		
	Range	0 – 20,000 µg/L (ppb) (Quinine Sulphate)		
CDOM / FDOM	Resolution	2 Auto-range scales: 0.0 - 9,999.9 µg/L, 10,000 – 20,000 µg/L		
	Repeatability	± 10% of reading		

The accuracy figures quoted throughout this document represent the equipment's capability at the calibration points at 25°C. These figures do not take into account errors introduced by variations in the accuracy of calibration solutions and errors beyond the control of the manufacturer that may be introduced by environmental conditions in the field. Accuracy in the field is also dependent upon full calibration and minimal time between calibration and use.